

SHUTTERS & SHOP FRONTS

The Shutters and Shop fronts we offer service from site survey, design and manufacture, through to installation.



SHUTTERS
METALS
SHOPFRONT

METAL WORK & SHEET WORK

We specialise in the fabrication of stainless steel, steel, aluminium & copper using TIG welding and MIG welding. We have highly skilled engineers and a range of coded and skilled welders.



18 YEARS EXPERIENCE

FREE QUOTATION

ARTWORK FREE

We innovate for your success!

Welcome

Here at River Sign in North London we design, create and innovate all types of signage, metal work and branding solutions to create the perfect image for your company.

Please feel free to browse our products and services to see what River Sign can do for you.

You can also contact one of our friendly team today on 020 8365 9152, or alternatively email us info@riversign.co.uk



STAINLESS STEEL LETTERS

BUILT UP LETTERS

FLAT CUT LETTERS

MENU SYSTEMS / DIGITAL PRINTING

NEON / LED SIGN SYSTEMS

FACIA SIGNS

LEAFLETS / TABLE MENUS

AWNINGS / CANOPIES

UNIFORM PRINTING

EXTRACTOR CANOPIES

SHUTTERS / SHOPFRONTS

METAL WORKS

FOR MORE INFORMATION PLEASE CALL US



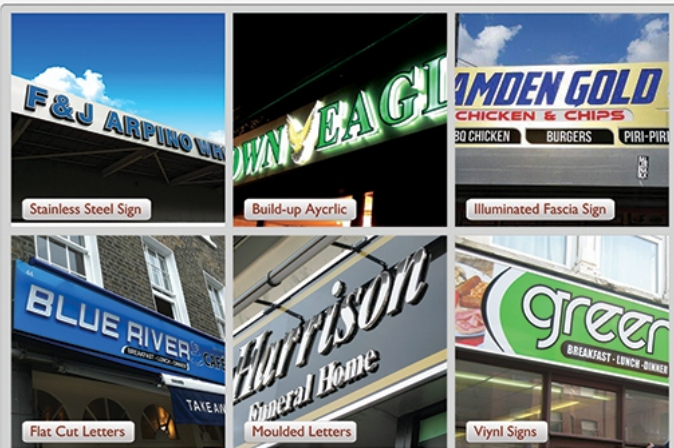
Terms & Conditions APPLY: Promotion Offers are one per order ONLY. Not in conjunction with any other offer. Give away offers with orders over £1000. *Free Window graphics only with Delivery & Installation orders.

Unit 22 Willoughby Lane, Tottenham, London, N17 0YL | 020 83659152 | www.riversign.co.uk
follow us on @river.sign | @riversigns | 07918 881829/30 | info@riversign.co.uk

FASCIA SIGN SYSTEMS

River Sign makes fascia signs in any shape or size to suit **YOUR BUSINESS.**

- Vinyl graphics
- Individual letters
- Aluminium trays
- Di-a-bond folded trays
- Illuminated:
 - by LED, Neon or by a more traditional way by fluorescent tubes
- Moulded letters
- Flat Cut Letters
- 3D Built-up letters
- Face and return illumination (NO HALO)
- 3D Rim & Return letters Face and Halo illumination.



LED LIGHT SYSTEMS

LED lighting can **save up to 85%** of the electricity used by standard bulbs and up to 50% of electricity used by fluorescent tubes.

LED's can be used to build energy-efficient lighting products that **SAVE ENERGY**, help protect the environment, reduce maintenance costs and make your shop lighting, look more attractive than traditional lighting. And they can last much longer than standard lighting.



AWNINGS & CANOPIES

Protect entrances and walkways from the elements and shield draperies and furnishings from fading in the harsh sunlight.

Add your logo or custom design to your business awnings and canopies.

It's a good way to **ADVERTISE!**

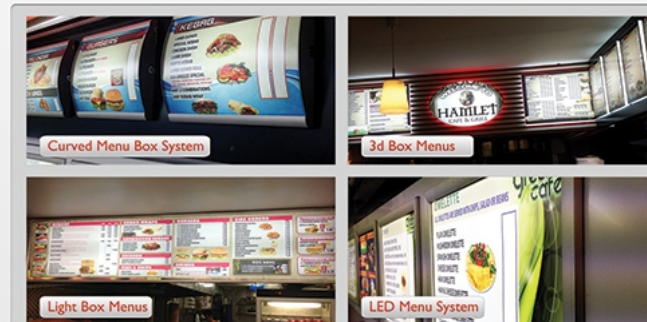


MENU SYSTEMS

Designed for their flexibility and to suit all budget, our range of menu systems will suit your exact needs and include everything you need for a complete point-of-purchase.

POINT-OF-PURCHASE

We have a wide range of menu systems, please ask one of the team for free advice.



LARGE FORMAT DIGITAL PRINTING

River Sign has invested in state of the art manufacturing facility with hi-resolution printers, enabling the production of true vibrant photo quality colours.

A wide range of media and finishing solutions are also available, ideal for a number of applications from

- ADHESIVE VINYL
- BANNERS
- TRANSPARENCIES (BACKLIT FILM)
- BRIGHT WHITE PAPER
- CLEAR FILM

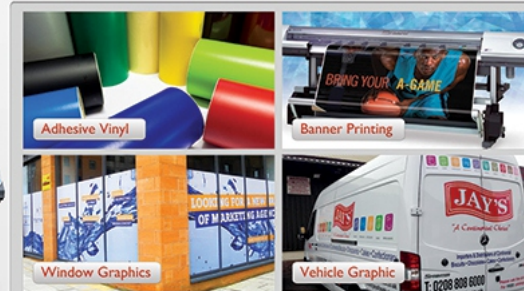
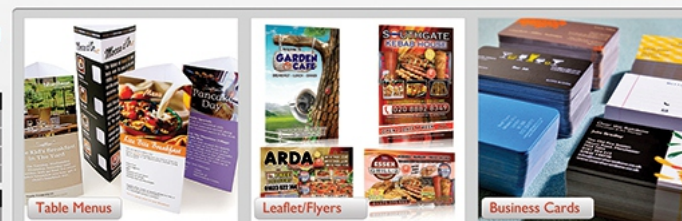


TABLE MENUS/FLYERS

Available in various sizes A5 - A4 - A3 and more any volume with encapsulation

QTY	130GSM	150GSM	170GSM
5000	£320	£370	£410
10000	£380	£430	£480
25000	£549	£599	£649

TABLE MENU (A3) WITH LAMINATION EACH WITH LAMINATION (GLOSS OR MATT) £9.00



UNIFORM PRINTING

T Shirts, Caps, Polo Shirts, Jackets, Track Suits, Overall, Football shirts, Hoodies and more

ANY VOLUMES..!

